



# Blue Lion Learning

Information and Protocols for the 2020-2021 School Year

Washington Middle School

Effective 8-1-2020

**In a world where it seems like everything is changing, there is one thing that won't change: we are here for you and our community.**

**While Blue Lion Learning will not look like it used to, it will continue to give every student the tools they need to be successful.**

**WCHCS will continue to Engage, Inspire, and Grow all Blue Lions in an innovative and effective way, not bound by time, space, or environment.**



# Washington Middle School

## Protocols for 2020-2021 School Year

### Entry to WMS

- Students will enter in 4 separate entryways, depending on their grade level.
  - 6th Grade will enter by the gymnasium and proceed to the 6th grade stairway
  - 7th Grade will enter at Liberty Hall and proceed upstairs on the 7th grade stairway.
  - 8th Grade will enter at the main parking lot entrance and proceed to their 1st period class.
  - Bus students will enter the Elm Street side entrance and:
    - 6th grade bus students will enter the building, turn right, and proceed to the 6th grade stairway.
    - 7th grade bus students will enter the building, turn left and proceed to the rotunda stairway.
    - 8th grade bus students will enter the building, and proceed to their 1st period class.
- Upon entering the building, all students will grab breakfast and enter their 1st period classroom at which point they will have their temperature taken.
  - Students will be permitted to eat breakfast and prepare for the day in their 1st period classroom.
- Throughout this process, social distancing will be required. Outside, students will see Blue Lion paw prints indicating proper social distancing protocol.

### Exiting from WMS

- Students will be released in waves to prevent a mass exodus from the buildings.
  - The first group of students will be students riding buses. This group of students will exit the building at the Elm. St. main entrance. This is because buses run on a district-wide schedule to prevent other buildings from being delayed.
  - The second group of students released will be students being picked up in the parking lot. These students will exit the building at the main entrance on the parking lot side. We are asking students to leave school grounds as quickly as possible to prevent congregating.
  - The final group of students released will be students walking home from school or riding bikes. Those students will exit the building on the Willard St. exit near the bike racks.

### Bathroom Protocol

- Students will not be permitted to use the restroom during transitions between classes. They will, however, be permitted to go from the classroom. We know that this is different from typical situations, however, we are trying to limit the number of students who are in the bathroom at the same time.
- Social Distancing reminders will be placed on the floors for those students who may be waiting their turn in the bathrooms.

## Temperature Taking Protocol

- We are requesting all families to take the temperatures of their students prior to leaving the house each day. Please do not send students who are symptomatic or who have a temperature of 100.0 or above.
  - Symptoms are:
    - Fever or chills
    - Cough
    - Shortness of breath or difficulty breathing
    - Fatigue
    - Muscle or body aches
    - Headaches
    - Loss of taste or smell
    - Sore throat
    - Congestion or runny nose
    - Nausea or vomiting
    - Diarrhea
- Upon entry into the student's first period class, students will have their temperature taken by a school staff member.

## Hallway movement

- All students will walk on the right side of the hallway and remain socially distanced as best as possible.
- Students will be permitted to carry book bags in order to forgo the need for locker visits. Lockers will not be utilized at this time in order to prevent clustering of students. If this is a problem, please contact the WMS administration.
- Students will transition to their next class in waves to prevent an entire grade level switching classes at the same time.

## Face Coverings

- Per Governor DeWine's order on 8/4/2020, all students attending in-person schooling will be required to wear a face covering.
- Exceptions to the policy will be in accordance with the exceptions listed by the Ohio Department of Health, determined on a case-by-case basis by the building health clinic.

# Washington Middle School

## Remote Learning Expectations for Students

### Student Expectations & Attendance

#### Working Remotely

- WMS will utilize the Google and Canvas platforms. The expectation is that every student will attend each class every day. Some teachers may conduct live instruction and these live classes will be held at your normally scheduled time of day.
- Recorded lessons should be viewed each day and assignments for that lesson completed each day.
- Attendance is required and will be recorded each day.

Period	Time
1st	7:20-7:50
2nd	7:53-8:35
3rd	8:38-9:20
4th	9:23-10:05
5th	10:08-10:50
6th	10:53-11:35
7th	11:38-12:20
8th	12:23-1:05
9th	1:05-1:50
10th	1:53-2:35

## Chromebooks/Use

- All WMS students will receive a school-issued chromebook to be used during the 2020-2021 school year.
- WMS will be utilizing a learning management system called **Canvas** which is a learning platform that has been purchased by the district to help organize the digital learning environment. All assignments and learning opportunities will be accessed from this platform. This will make our online education more efficient and effective.
- In addition to and within the Canvas platform, WMS teachers will be utilizing Google products such as Google Classroom, Gmail, Docs, Slides, Meet, etc. Canvas will act as a “homepage” and an organizer for all of these logins and programs to help keep everyone aligned.

## Schedules

- Students will have a schedule built for them, just as if they were present in the building for in-person learning. Depending on the number of students enrolled in remote learning, the class may be built entirely of remote learners or a blend of in-person and remote learners. We will do our best to provide all of the same opportunities online as we do in-person, however some of that is just not possible. Individual Unified Arts (specials) classes will be in contact with those students regarding their online learning status.
  - Regardless of whether it is a blended group or 100% online learners, video of the lesson will be streamed as well as uploaded to Canvas (Learning Management System) for review and reteaching purposes. All learning materials (handouts, slides, etc) will also be loaded into Canvas for the students’ benefit.
- Students will be required by the Ohio Department of Education to be active and online for a minimum of 5 hours each instructional day. Their individual schedule may allow for more time than that depending on their course selection. For example, if your student is learning online and has Science 2nd period (7:53-8:34) then the expectation is that that your child is online and signed in during that time so that attendance can accurately be taken and documented.
  - Students **will** be required to adhere to our WCHCS K-12 Online Learning Attendance Policy.
- Students and families will have the opportunity to still request meetings, either in-person or virtually, with teachers to clarify instruction or to receive additional help. Our goal is to have a seamless transition between those learning in-person and those students who are online.
- Online activity will be monitored by administration and students may be subject to losing online learning privileges based on online behavior.

## Grades

- Will be determined by your attendance, work completion and accuracy of assignments and assessments.
- Your grade will be a reflection of your abilities, effort and demonstration of your content knowledge.
- In-person assessments may be periodically required by the district/state. In these instances, all WCHCS procedural protocols will be followed.

### **Teachers, Counselors and Administrators are accessible.**

- Reach out to teachers for support through email
- All issues need to be communicated so that we can help you be successful.
- We can help you with academic issues as well as social-emotional issues. If you need someone, please reach out to us.

# WCHCS Blue Lion Learning District Protocols

## Visitors

- Visitors will NOT be allowed to enter the building, unless pre-arranged with building personnel for the explicit purpose of meeting regarding student academic, mental, or behavioral progress. If a visitor needs to see school personnel without an appointment you can call and request a meeting with the main office of your child's school.
- Visitors who have a scheduled appointment are required to wear a mask upon entering the building.

## Food Service

### PAYMENT

- If our free and reduced lunch totals are approximately 70% of our students, school breakfast and lunch will be at no cost to students. Otherwise all payments are to be made in advance online using my school bucks.

### LOCATION/STAFFING

- All students will eat their breakfast/lunch in a classroom that is monitored by a teacher or other school personnel.

### BREAKFAST

- Students will pick up their breakfast as they enter the building OR have their breakfast delivered to their classroom, which is where they will eat.

### LUNCHES

- Students will sanitize/wash hands/space before eating using disinfectant wipes.
- Cafeteria staff will pack a brown bag lunch for each student or students may bring their own lunch from home. Microwaves will not be available.
- Lunches will be picked up or delivered to the classrooms/location.

### CLEAN UP

- A trash bag will be provided for each classroom for disposal purposes.
- Students will individually dispose of their own trash after eating.
- Students will sanitize/wash hands/space after eating



## Classroom Social Distancing

In every classroom,

- all students will have an individual, assigned seat/area/space
- the assigned student space will be identified through name tags and/or floor markings
- the teacher desk will be limited to teacher/instructional aide/administrator use only
- there will be two clear plastic dividers provided for each classroom

In BLUE LION classrooms, all students will be separated by a minimum of 6 feet.

In WHITE LION classrooms, where a six feet separation is not possible, students will have a minimum of a 3 feet separation.

## Change of Class Cleaning Protocol

- Cleaning supplies that we have: formula with sprayer, hand sanitizer, hand washing in class where applicable, wipes for electronics
- Upon leaving a space, students will pack up materials and use hand sanitizer or wash hands in the sink, if available.
- Before leaving a classroom, each desk will be wiped down with a cleaning wipe.
- All door handles will be wiped clean at the end of each class.
- Students will use disinfecting wipes on desks after breakfast and before and after lunch.
- All classrooms will be sprayed with disinfectant at the end of the day by the custodial staff.

## Health Clinic

Initial Screening Upon Entry to School

- Any student who has a 100 degree temperature or above and/or COVID-19 related symptoms will be immediately escorted to the nurse's secondary office.  
Upon entry to the area, guardians will be notified so that an expedited pickup can occur.
- If pickup cannot occur, the school will notify Mr. Skaggs and the transportation department will provide transportation home for the student.
- Any student sent home will be documented so that the buildings can monitor re-entry. Any student sent home based on symptoms will be required to:
  - Have a doctor's note explaining fever/symptoms
  - Quarantine for a time to be determined by the FCHD.
  - Any student put into quarantine will remain online for the duration of the quarter\*

## Health Clinic (cont.)

### After Initial Screening

- If a student brings a COVID-19 related symptom to the attention of their teacher, the teacher will send the student directly to the nurse's secondary office.
  - Any student sent to the nurse's office will be given a disposable mask to wear until the student is picked up.
- Teachers will call the secondary nurse's office from the classroom phone to notify the nurse that a student is inbound, identifying:
  - Teacher name
  - Period (if applicable)
  - Student Name
- The nurse will prepare space for student and notify the principal's office

### Principal's office will:

- Notify guardians for pickup
  - If pickup cannot occur, notify Mr. Skaggs and the transportation department will provide a way home for the student.
  - Any student sent home will be documented so that the buildings can monitor re-entry. Any student sent home based on symptoms will be required to:
    - Have a doctor's note explaining fever/symptoms
    - Quarantine for a time to be determined by the FCHD.
    - Any student put into quarantine will remain online for the duration of the quarter

# **GENERAL GUIDANCE FOR FAYETTE COUNTY SCHOOLS**

Updated: 08/05/2020



**Public Health**  
Prevent. Promote. Protect.

Thank you for the great collaboration between the school districts and Fayette Public Health Department during the COVID-19 Pandemic.

The restarting of Education Fall 2020 is largely based upon two documents;

- 1) “Reset and Restart Education: Planning Guide for Ohio Schools and Districts”, released 6/20/2020
- 2) “COVID-19 Health and Prevention Guidance for OHIO K-12 SCHOOLS”, released 6/20/2020

This 2020-2021 School year will definitely look and feel different from previous years. Students could possibly be sent home for symptoms they previously were allowed to remain in the classroom for. This will be necessary for the safety of everyone.

It is essential for schools to reinforce to students, parents or caregivers, and staff the importance of students staying home when sick until at least 24 hours after they no longer have a fever (temperature of 100 or higher) or signs of a fever (chills, feeling very warm, flushed appearance, or sweating) WITHOUT the use of fever-reducing medicine. Policies that encourage and support staying home when sick will help prevent the transmission of SARS-CoV-19 (and other illnesses including flu) and help keep schools open.

§ People with COVID-19 have had a wide range of reported symptoms – ranging from mild symptoms to severe illness. Symptoms may appear 2-14 days after exposure to SARS-CoV-2.

· CDC does not currently recommend universal symptom screenings (screening all students grades K-12) be conducted by schools.

## 1. Positive Diagnosis of COVID-19: student or staff member

- a. Parents & staff will be informed which classroom the confirmed case is in. There will be no identification of actual positive individuals.
- b. The school district will work closely with FCPH for contact tracing.
- c. Anyone testing positive for COVID-19 will be ordered to isolate by FCPH and released from isolation by FCPH
- d. 14-day quarantine will be required of any student/staff member determined to have had close contact with a COVID-19 Case as determined by FCPH.
- e. The FCPH will notify anyone that is considered a close contact of a positive case with instructions on how and when to quarantine.

**\* Communication will come from Fayette County Public Health (FCPH) not the school district.**

## 2. Other student health issues that are NOT diagnosed as COVID-19

- a. Schools shall send home any child or employee who has a temperature of 100 degrees or higher. This individual may not return until they are fever free for 24 hours, without the use of fever-reducing medication
- b. When the child returns to school, the teacher may choose to have them checked by the nurse if deemed necessary
- c. If the individual has had contact with someone confirmed or probable to have COVID-19, they must complete quarantine procedures as directed by the FCPH prior to returning to school.

## 3. Food Service

All districts will offer food service. Logistics will be determined by each district in compliance with FCPH based on:

- a. Reduced capacity/occupancy or 10 students maximum per table and 3- 6 foot spacing between table edges
- b. No self-service
- c. Individual condiments
- d. Students should wash or sanitize their hands prior to eating

## 4. Classroom Size

- a. Districts will inform parents that safety protocols are in place but any student who attends school will incur some level of risk. Districts will decrease the likelihood of infection with hygiene, cleaning, and safety procedures, but being in a public place has a certain level of risk that cannot be eliminated.
- b. Classroom occupancy will be determined based on each individual circumstance with the maximum amount of safety considerations possible.
- c. Face coverings (that cover the nose and the mouth) are required for all students K-12 unless there is a medical reason for not wearing them or if social distancing can be implemented.
- d. School employees will be required to use a face covering when they are within six feet of other people.

- e. Assigned seating is highly recommended by FCPH to aid in contact tracing should that become necessary.

## 5. Visitors and Volunteers

- a. Visitors are generally discouraged from being in school district facilities.
- b. Safety protocols such as taking temperatures, wearing masks, screening questions (sick, travel or contact with positive case) and signing in with a contact phone number will be required for all visitors.

## 6. Transportation

- a. FCPH recommends assigned seating to determine who must be quarantined if there is a positive case that rides the bus.
- b. Disinfect high touch surfaces on buses after completing each route.
- c. Face masks are required for drivers and students

## 7. Recess:

According to the American Academy of Pediatrics (2013), "Recess represents an essential, planned respite from rigorous cognitive tasks. It affords a time to rest, play, imagine, think, move and socialize." Health Guidelines are to be followed (physical and social distancing) for recess periods.

- a. School districts will make every effort to maintain consistency with other safety procedures.
- b. This may mean that districts limit student access to certain pieces of playground equipment and restrict activities that are "high touch" and difficult to clean or maintain social distancing.
- c. All districts will work toward "structured" recess activities such as nature walks that limit students' physical contact with others.
- d. Students must sanitize their hands before and after recess
- e. Parents may choose to "opt out" of recess for their children

## 8. Returning to School after COVID-19 illness (symptomatic)

- a. 1 day (24 hours) with no fever (without using fever reducing medication) and
- b. other symptoms improved and
- c. 10 days since symptoms first appeared

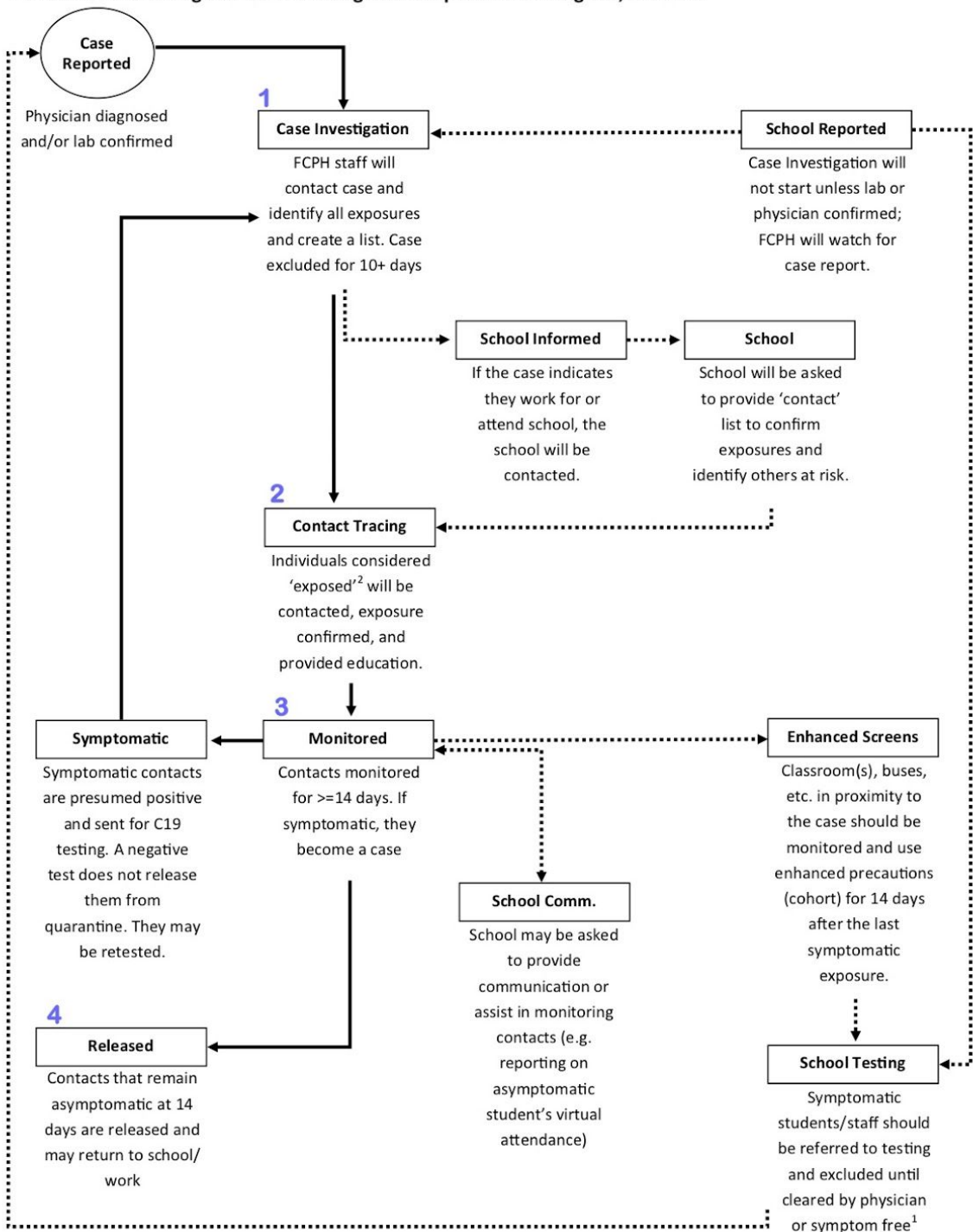
## 9. Returning to School after COVID-19 (asymptomatic)

- a. 10 days have passed since test without any symptoms developing

## 10. Communication and Education

- a. Communication and education for parents and caregivers will be exceedingly important to the schools remaining open.

**COVID-19 Monitoring and Case Investigation Response Plan Diagram, SY 20-21**



<sup>1</sup> At a minimum, schools should follow the ODH (CDC) guidance for symptom identification and school exclusion  
<sup>2</sup> CDC considers  $\geq 15$  minutes within 6', regardless of mask use, 2020-07-31

**This is only a guideline and could change at any given time with guidance for ODH, ODE and CDC**



## COVID-19 Monitoring and Case Investigation Response Plan Diagram, SY 20-21

### SECTION 1: Symptoms

If your child has any of the following symptoms, that indicates a possible illness that may decrease the student's ability to learn and also put them at risk for spreading illness to others. Please check your child for these symptoms:

- Temperature 100 degrees Fahrenheit or higher when taken by mouth
- Sore throat
- **New** uncontrolled cough that causes difficulty breathing (for students with chronic allergic/asthmatic cough, a change in their cough from baseline)
- Diarrhea, vomiting, or abdominal pain
- New onset of severe headache, especially with a fever

### SECTION 2: Close Contact/Potential Exposure

- Had close contact (within 6 feet of an infected person for at least 15 minutes) with a person with confirmed COVID-19 [regardless of the use of a mask by either individual]
- Traveled to or lived in an area where the local, Tribal, territorial, or state health department is reporting large numbers of COVID-19 cases as described in the Community Mitigation Framework
- Live in areas of high community transmission (as described in the Community Mitigation Framework) while the school remains open

### SECTION 3: Return-to-School Policies

If the student/parent/caregiver **answers YES to any question in Section 1 but NO to any questions in Section 2**, the student would be excused from school in accordance with existing school illness management policy (e.g., until symptom-free for 24 hours with- out fever reducing medications).

If the student or parent or caregiver **answers YES to any question in Section 1 and YES to any question in Section 2**, the student should be referred for evaluation by their healthcare provider and possible testing. CDC strongly encourages local health depart- ments to work with local school systems to develop

a strategy to refer symptomatic individuals to an appropriate healthcare provider or testing site. State, Tribal, territorial, and local health officials and/or healthcare providers will determine when viral testing for SARS-CoV-2 is appropriate. Schools should not require testing results as a part of return to school policies. Students who have received a negative test result should be allowed to return to school once their symptoms have otherwise improved in accordance with existing school illness management policies.

**Students diagnosed with COVID-19** or who answer YES to any question in Section 1 and YES to any question in Section 2 without negative test results should stay home, isolate themselves from others, monitor their health, and follow directions from their state or local health department. Students and their families should be advised that the local health department may contact the family for contact tracing. If contacted, families should notify the contact tracer that the student attended school.

Students diagnosed with COVID-19 or who answer YES to any component of Section 1 AND YES to any component of Section 2 without negative test results should be permitted to return to school should be in line with current CDC recommendations in “When Can I Be Around Others”. A negative test or doctor’s note should **not** be required for return. Questions regarding return to school should be jointly decided in consultation with parents or caregivers, school personnel, and the student’s healthcare provider.